

# COMPARISON OF MANUALLY CREATED AND AI-GENERATED MIND MAPS:

## INSIGHTS FROM PRESERVICE TEACHERS

Mária Čujdíková, Comenius University, Bratislava, Slovakia

### Objective:

Explore preservice teachers' perceptions of manually created versus AI-generated mind maps in educational contexts.

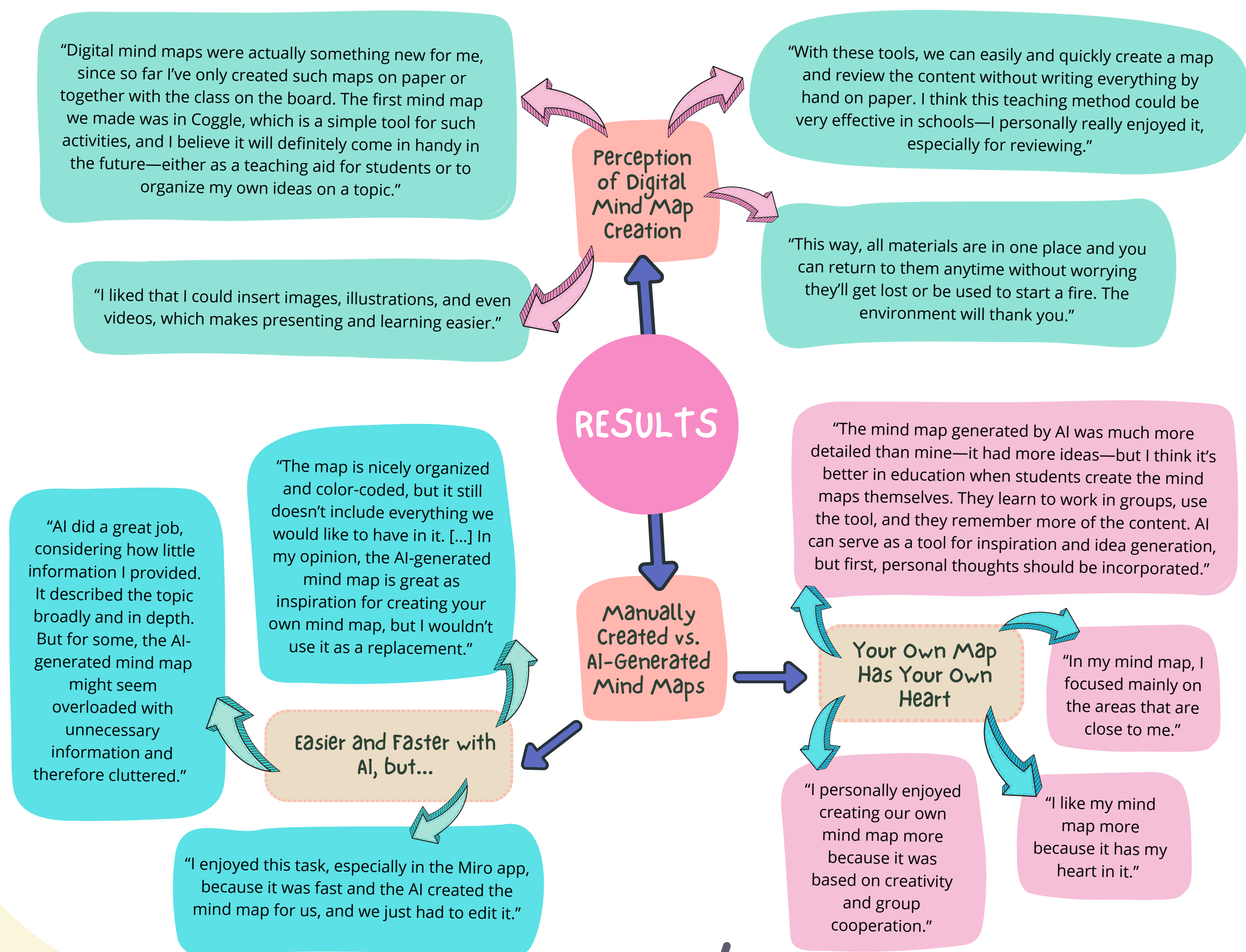
### Method:

**Participants:** 34 preservice teachers

**Tools:** Coggle (manual mind maps), Miro (AI-generated mind maps)

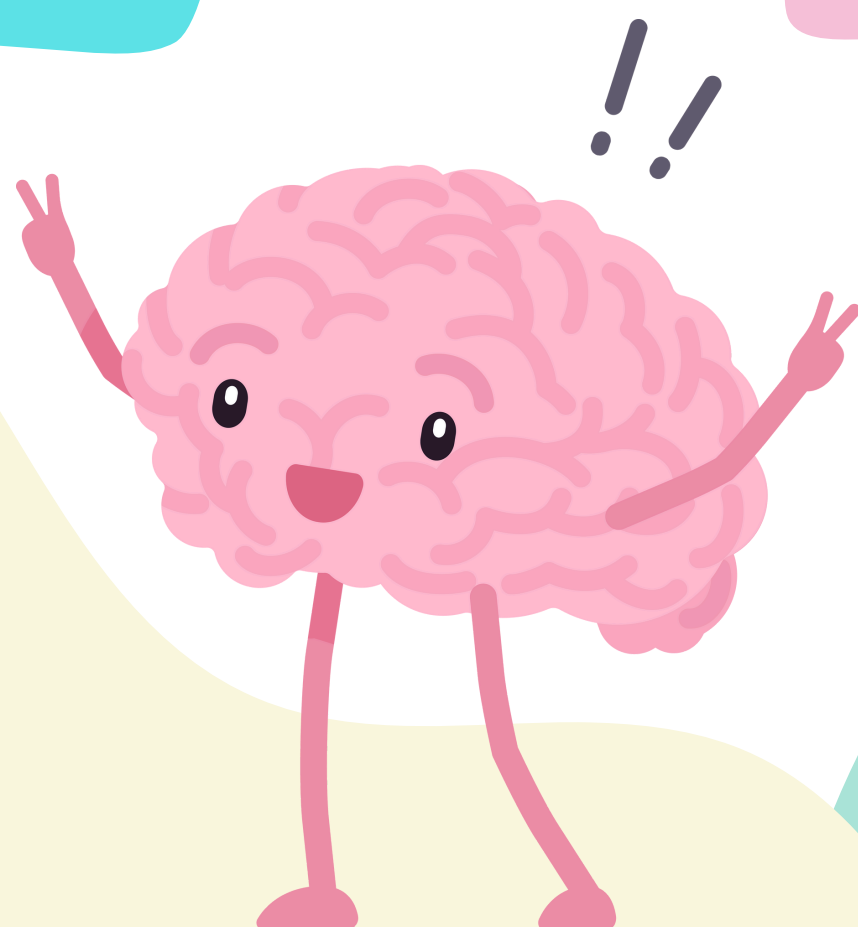
**Data:** student reflections

**Analysis:** qualitative content analysis



### Conclusion:

- Manual Maps (Coggle): Preferred for personal creativity, authenticity, and precise content structuring.
- AI-Generated Maps (Miro): Appreciated for speed, richer content, and as inspiration, though sometimes considered overly detailed or impersonal.
- Combination of both approaches considered most effective for educational practice.



EDULEARN25

Palma de Mallorca, Spain

June 30 - July 2, 2025